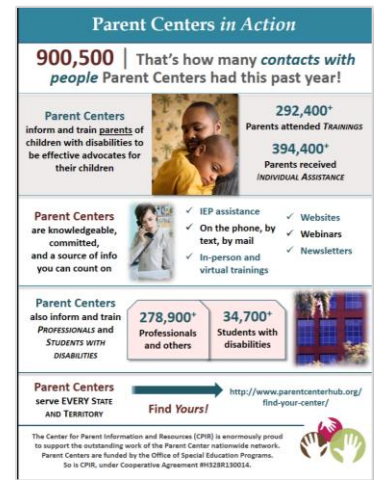


How to Adapt This Infographic for Your Parent Center

A quick guide for you from the
Center for Parent Information
and Resources (CPIR)
<http://www.parentcenterhub.org>

May 2018



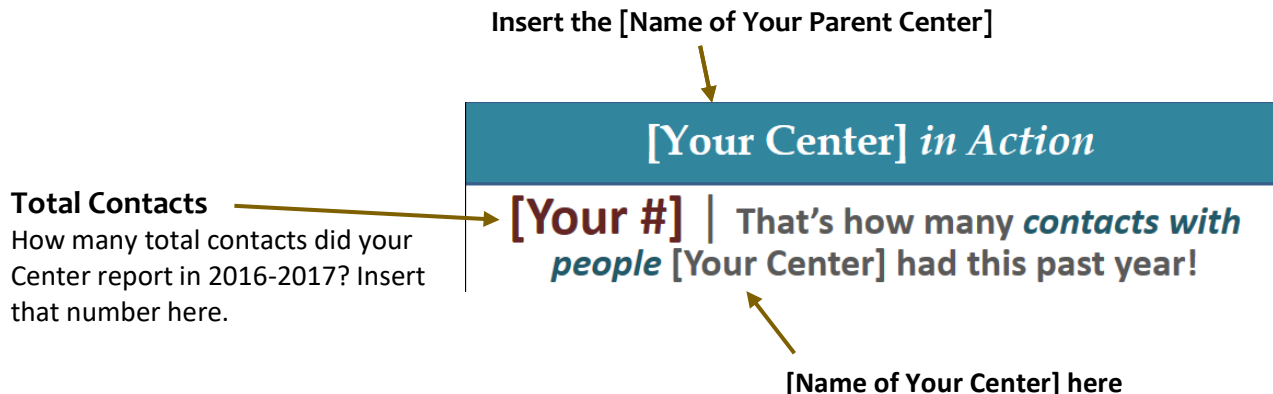
This quick guide accompanies... | The infographic of *all* Parent Center results for the year 2016-2017. That infographic is available in two forms: as a PDF for easy sharing, AND as a PowerPoint file that you can adapt to present **YOUR** Parent Center's information and results.

What's in this guide? | This guide shows you all the places in the adaptable infographic where you can insert your own data, so the infographic ends up being about only **YOUR** Center's achievements.

Where do I get the data for my Center? | Use the data you submitted to CPIR as part of the 2016-2017 data collection.

Where to Make Changes

Now—here's a summary of what you might want to change in the basic infographic to present your own Center's results and contact information. We'll take the infographic part by part.



Name of Your Center

Change picture,
if you like

[Your Center]
informs and trains parents
of children with disabilities
to be effective advocates
for their children




292,400+
Parents attended *TRAININGS*

394,400+
Parents received
INDIVIDUAL ASSISTANCE

Insert Your Center's Data here

Our Staff
are knowledgeable,
committed,
and a source of info
you can count on



- ✓ IEP assistance
- ✓ On the phone,
by text, by mail
- ✓ In-person and
virtual trainings
- ✓ Websites
- ✓ Webinars
- ✓ Newsletters
- ✓ Partner in
systems change

- Not many changes needed here. Adjust the description to mirror what your Center does or what you'd like to stress. Change the picture, as you'd like.
- "Our Staff" can be altered to the name of your Parent Center, but you'd also need to change "are knowledgeable..." to "...is knowledgeable..."

Name of Your Center


How many contacts did
your Center have with
professionals?

With students with disabilities? Fill in these data.

[Your Center]
also informs and
trains *PROFESSIONALS*
and *STUDENTS WITH*
DISABILITIES

[Your data]
Professionals
and others

[Your data]
Students with
disabilities



Use this space at the bottom as you'd like. It's a good place for logos, contact information (website address, email), and any branding your Center prefers.

[Your Center]
serves [FILL IN STATE
OR AREA SERVED]

Use this area to brand
this flyer for your
Center: logo, contact
info, etc.